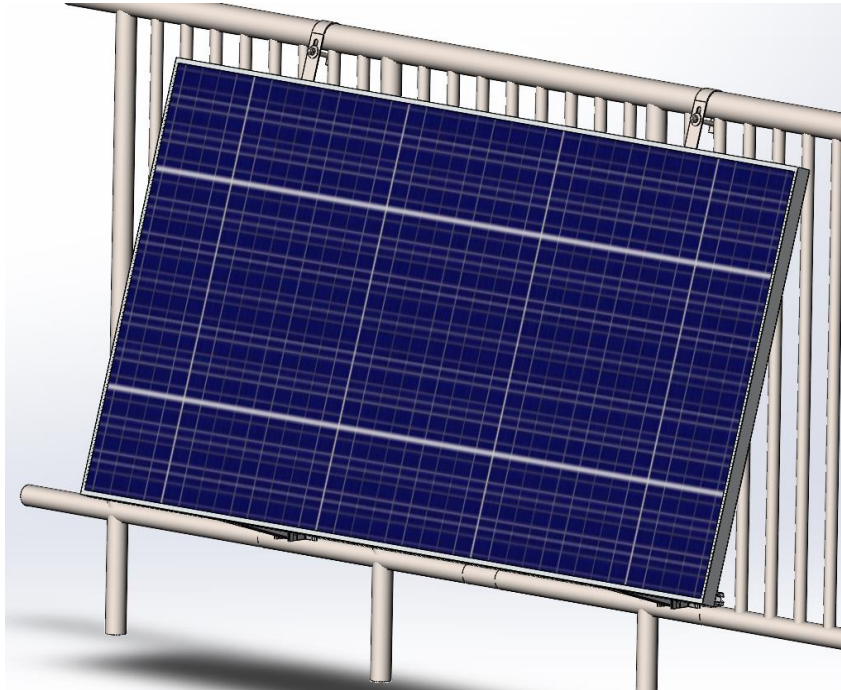


Installation instructions

— Adjustable Tilt-Leg Balcony Mounting System



I. Tools required for installation



Wrench 6mm



Monkey wrench



Torque Spanner
Suitable for bolt or nut M10&M12



Cordless drill



Adjustable Wrench
Suitable for bolt M8&M10&12



Drill Bit 9mm



Measuring tape

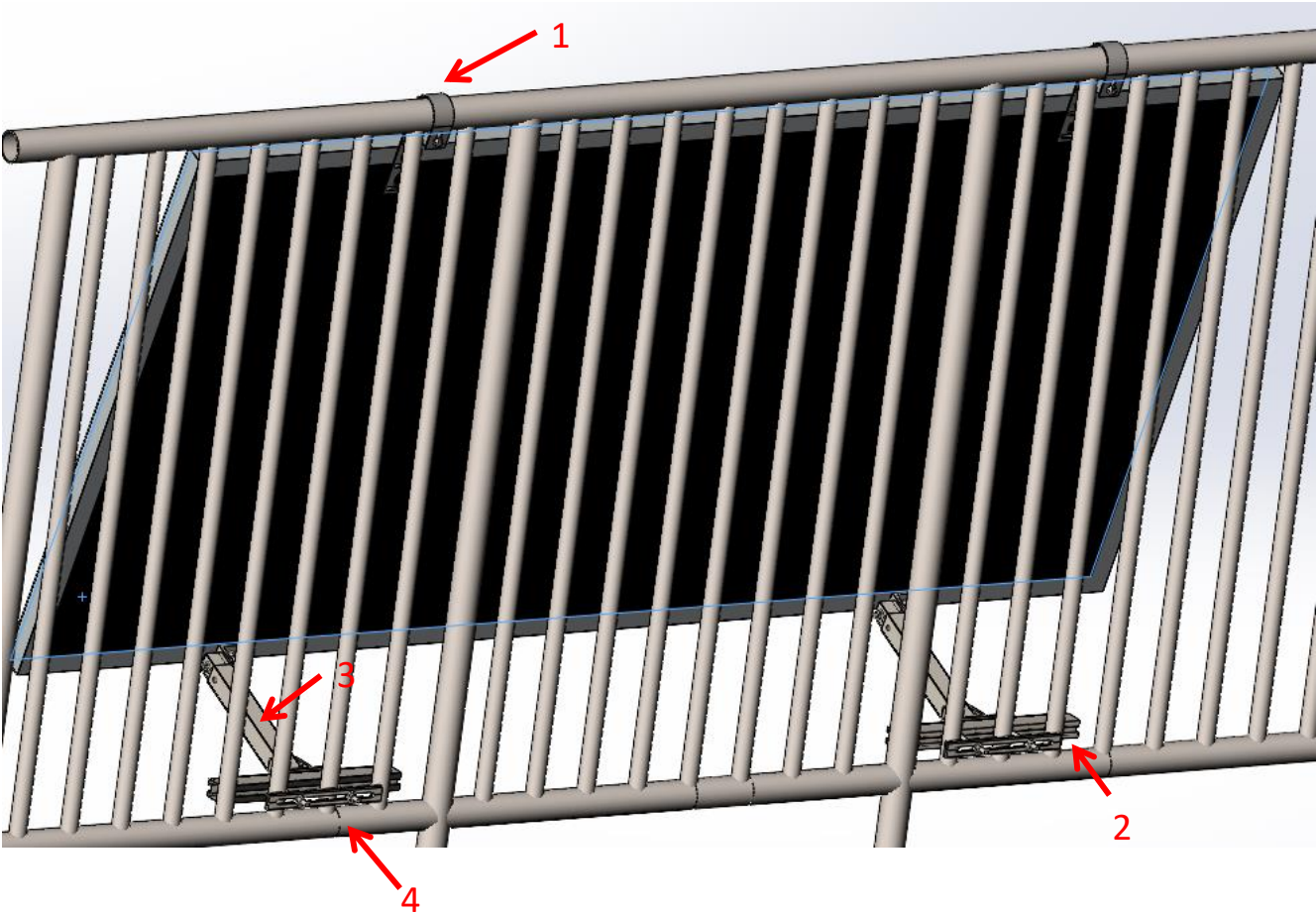


Rope

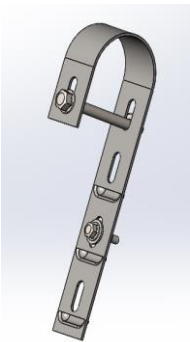


Wooden hammer

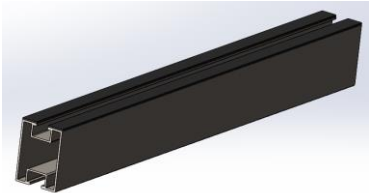
II. System components



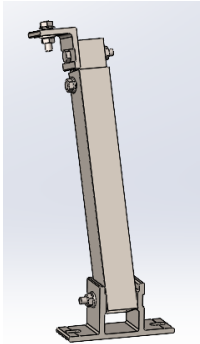
No.	Material	Product
1	SUS304	U-Hook
2	AL-6005-T5	Rail
3	AL-6005-T5	Adjustable leg
4	SUS304	Fixing plate



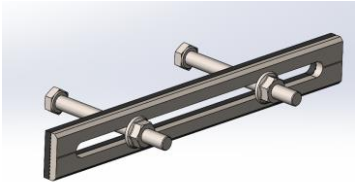
U-Hook



Rail



Adjustable leg

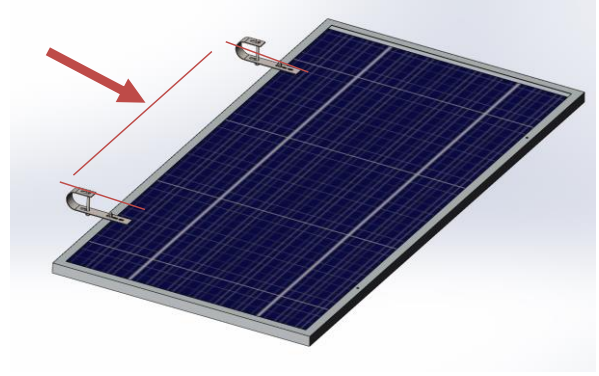
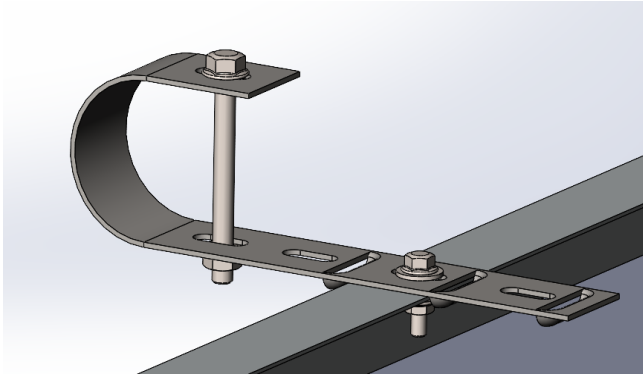


Fixing plate

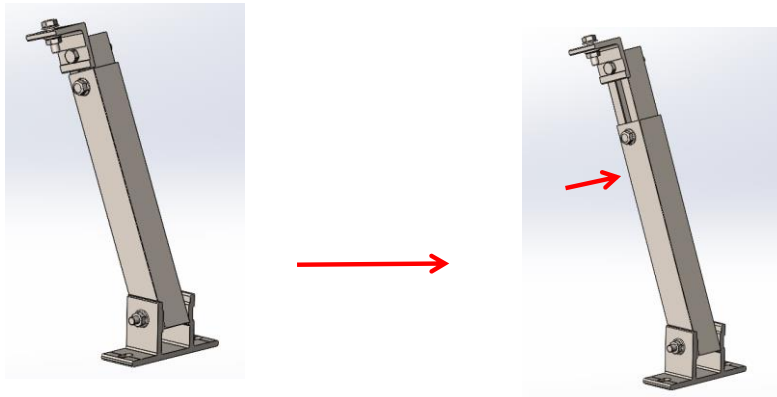
III. Installation Steps

Step 1: Pre-Assembly

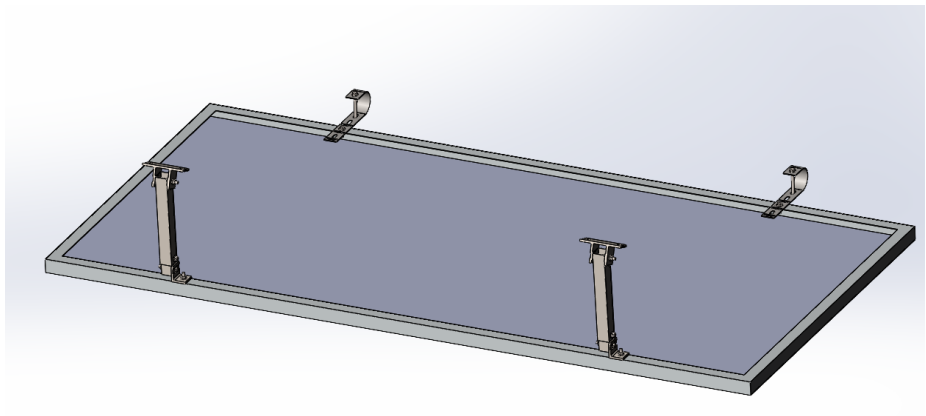
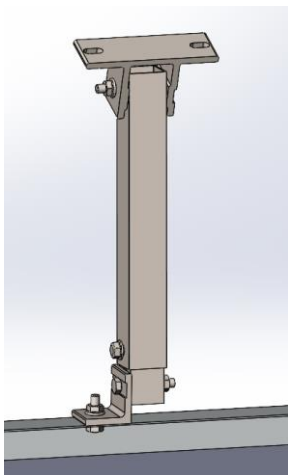
First, connect the U-hook to the appropriate hole position of the component with bolts according to the figure. (Take care to ensure that the hook is parallel and perpendicular to the component edge as much as possible)



The adjustable leg is pre-installed, as shown in the figure. After adjusting it to the length of use, lock the fixing bolt.

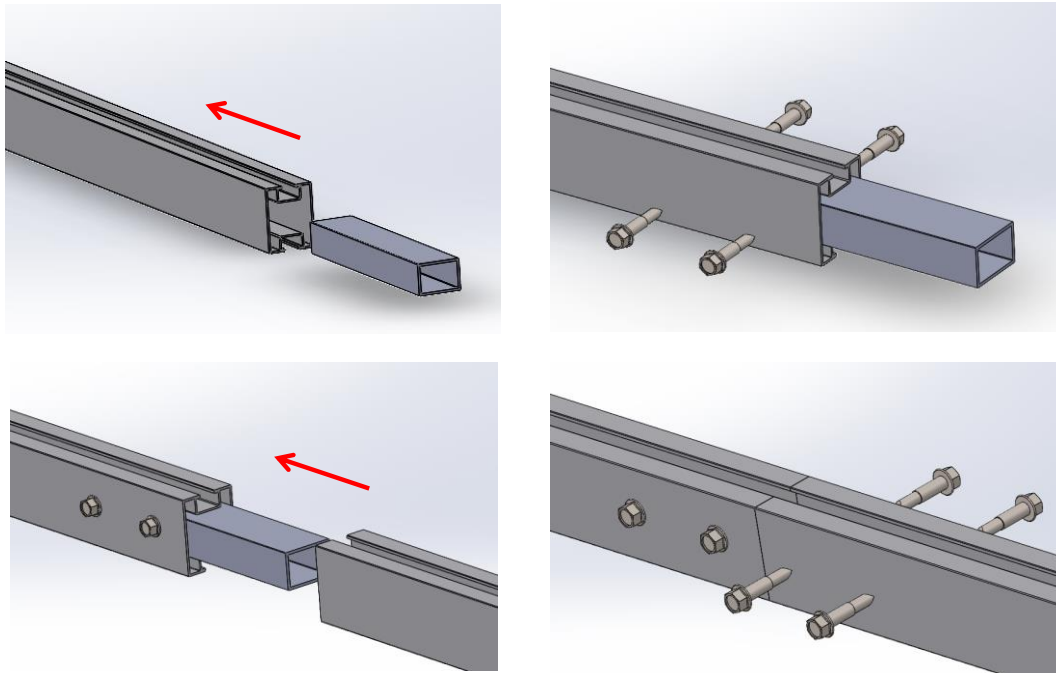


Connect the adjustable leg to the corresponding holes of the panel as shown below.

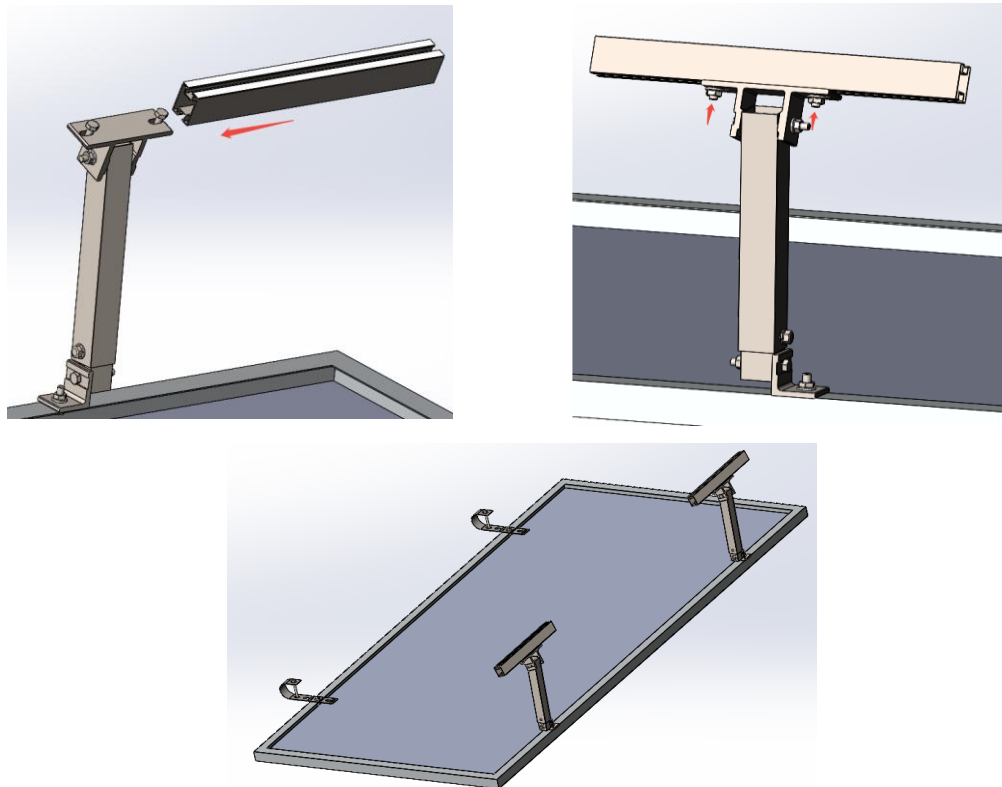


There are sections on the rail that need to be connected first, as shown in the figure below (skip if not applicable).

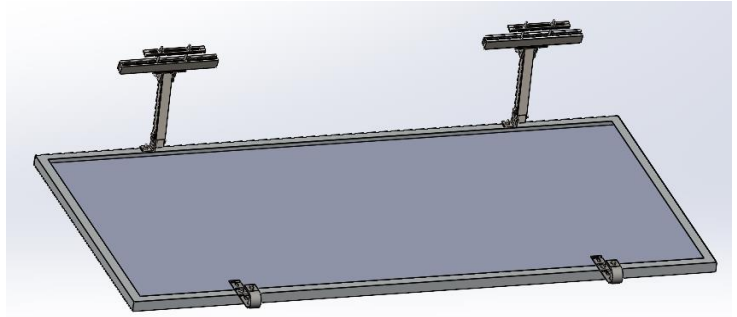
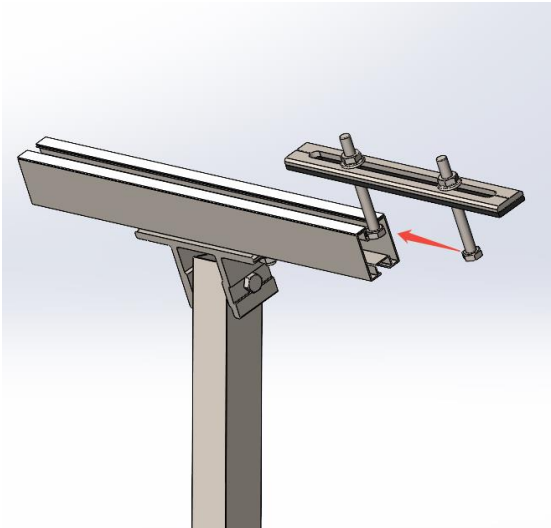
Insert the rail splice into the corresponding position on one side of the rail and secure both sides with self-tapping screws. Then, insert the other rail, ensuring there is no gap at the joint between the two rails. Finally, drive self-tapping screws from both sides to secure the other rail.



Slide the rail into the hex bolt on the base support, adjust it to the correct position, and tighten the bolt.

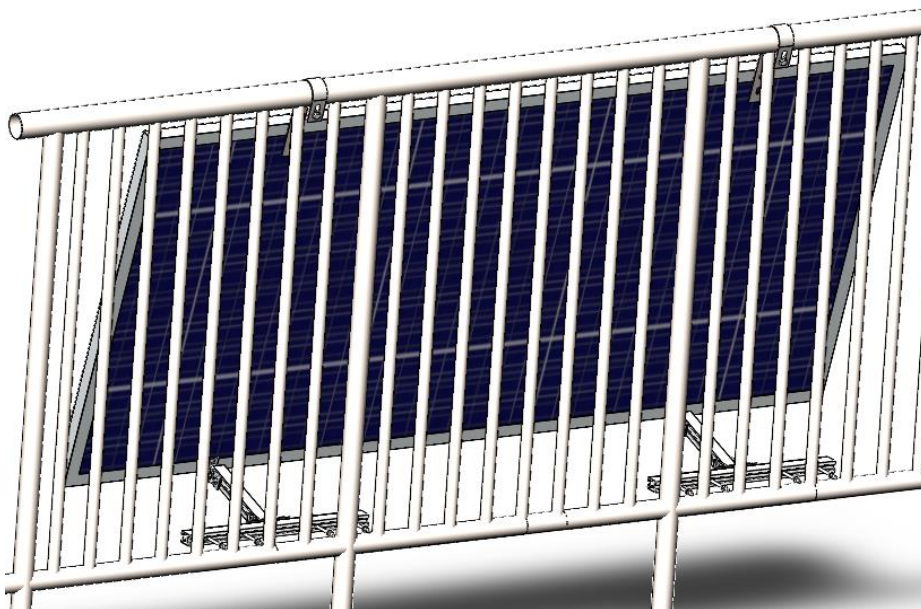
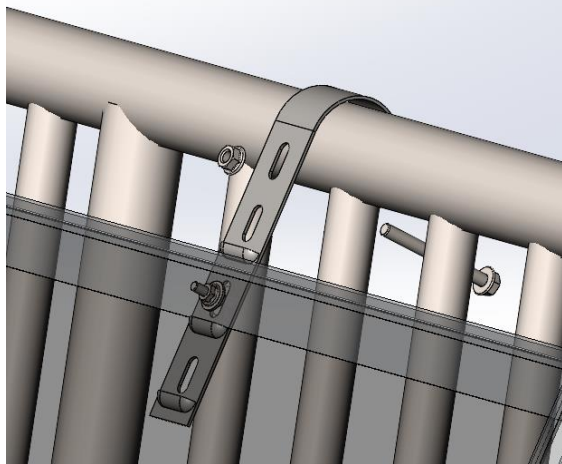
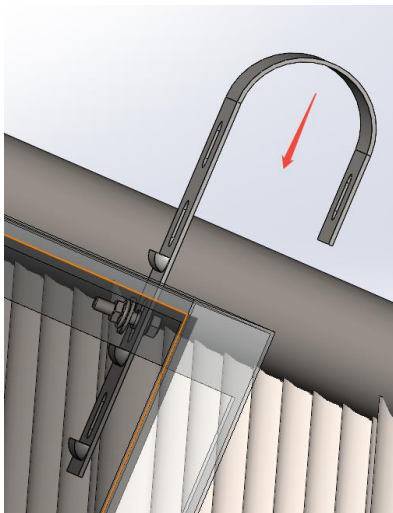


Slide the hexagon bolt head, which holds the fixing plate, into the other end of the rail to the correct position, as shown in the picture below

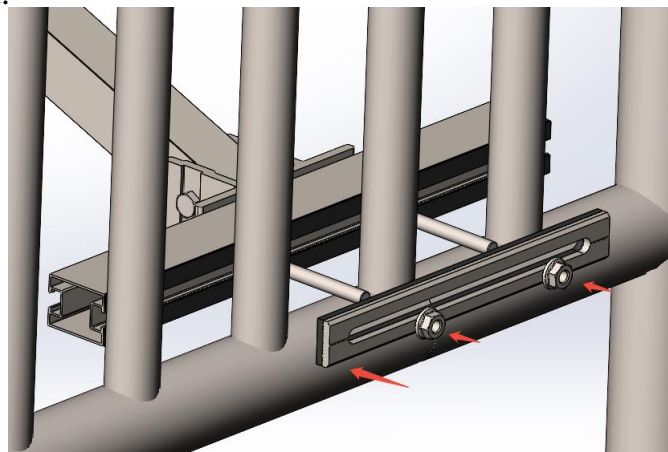


Step 2: Complete Installation

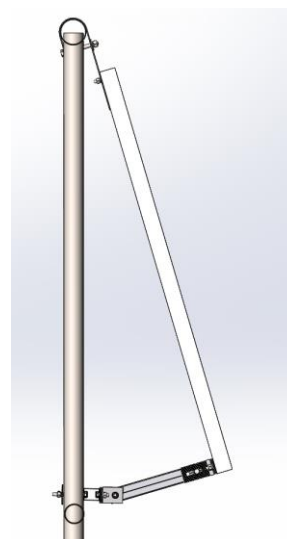
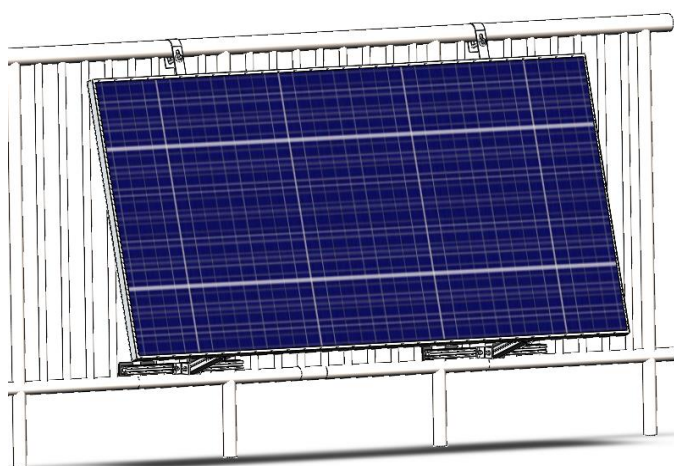
Fix the U-hook onto the balustrade as shown in the picture, and secure it with the locking bolt. Adjust the fixing plate bolts on the rail to achieve an appropriate gap. (The solid bottom plate can also be installed at this step without pre-installation, depending on the actual situation.)



The fixing plate is individually connected to secure the whole structure to the balustrade, and the locking bolt is tightened.



Step 3: Completion



Notice:

1. The bracket structure may cause injury.
2. The bracket components may cause injury.
3. Watch your head and eyes.
4. Be cautious at the installation site.